

# **Bird mortality hotline:**

**An exercise in collaboration**

**28 June 2018**

**Andrew Carryer, Manager - Environment**

- **Introduction to RGI**
- **The bird mortality hotline**
- **Project set up**
- **Status and how to improve**





# RGI – a unique coalition of industry and civil society

## Focus of electricity grid operators:

„We need to build up the power system without delay and without negative impact on nature and people.“

## Focus of NGOs:

„We need to grow renewable energies much faster to reach our climate targets.“



“We want a grid built in time and in line with environmental objectives and with people’s concerns.”

# Geographical scope





# RGI's main topics of expertise



Nature conservation



Public acceptance



Need for grids



PCIs & TYNDP



Offshore grids



Underground cables



Compensation



Grid aesthetics

# So... what is the problem?



# At risk species in Germany





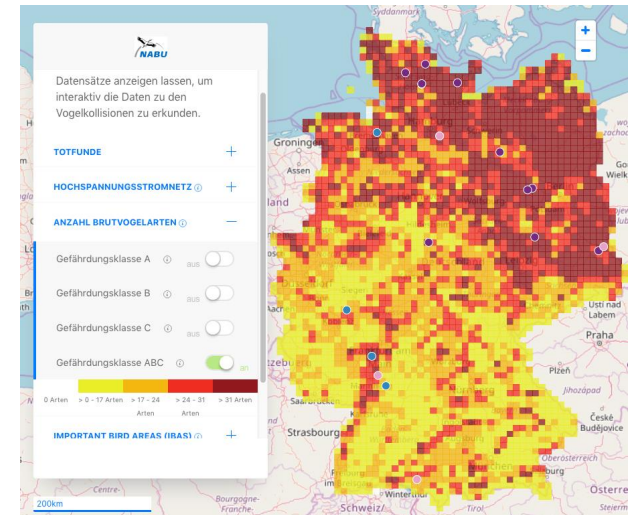
# What is the hotline?



Renewables   
Grid Initiative



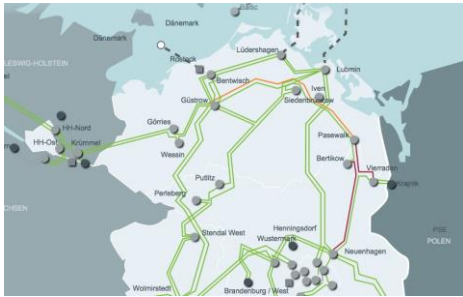
TRÄNSNET BW



# What is the purpose of the hotline?



**Identify the lines doing real harm**



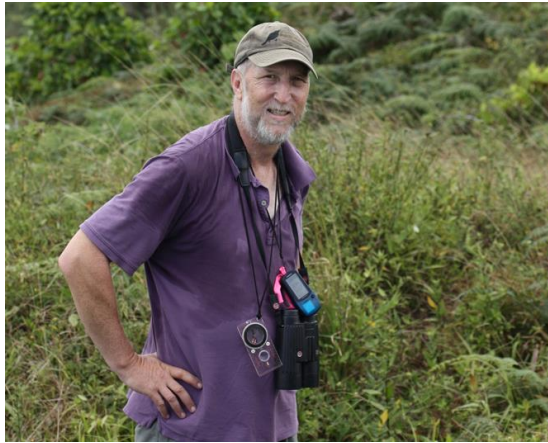
**Assist planning and routing**

***Secondary goals:***

***+ scientific data regarding bird mortality***

***+ trust and transparency***

# Who are the target “reporters”?





# How can you report a find?



## **NABU-Hotline „Vogelfund und Stromleitung“**

Sie möchten eine Vogelfundmeldung machen oder mehr zum Thema erfahren - rufen Sie unseren Vogelschutz-Experten Marius Adrion für die Aufnahme Ihrer Daten an!

**+49 (0) 30-284984-5500**

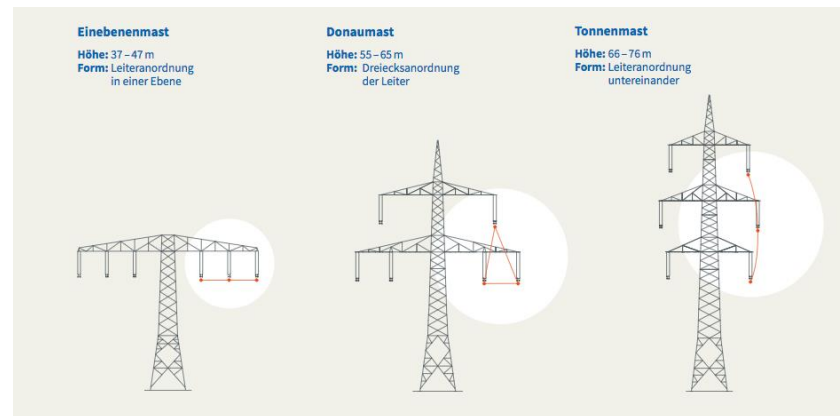
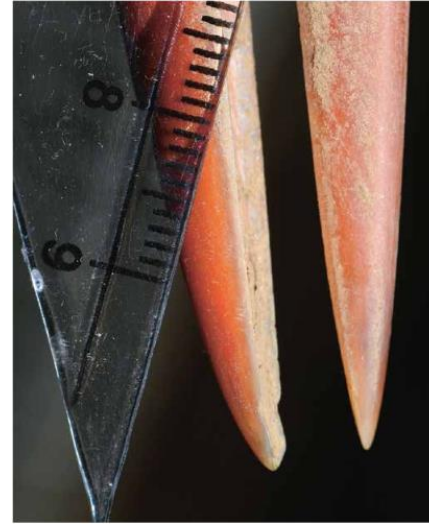
**Sie erreichen unsere Hotline werktags von 10 bis 16 Uhr.**

Melden Sie uns Ihre Beobachtung online. [Zum Meldeformular springen](#)



# What data is needed?

- Species (if known)
- Place (coordinates)
- Number found
- Reason (if known)
- Photo
- Protected area?
- Date
- Weather
- **WHAT PYLONS!?**



# What is the process?

Bird find data sent to NABU

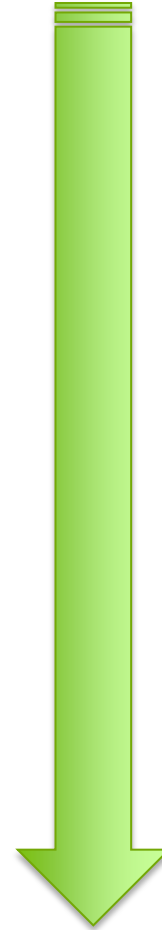
NABU reviews, does a  
“reality check” and verifies

Put into the database

Coordinates mapped

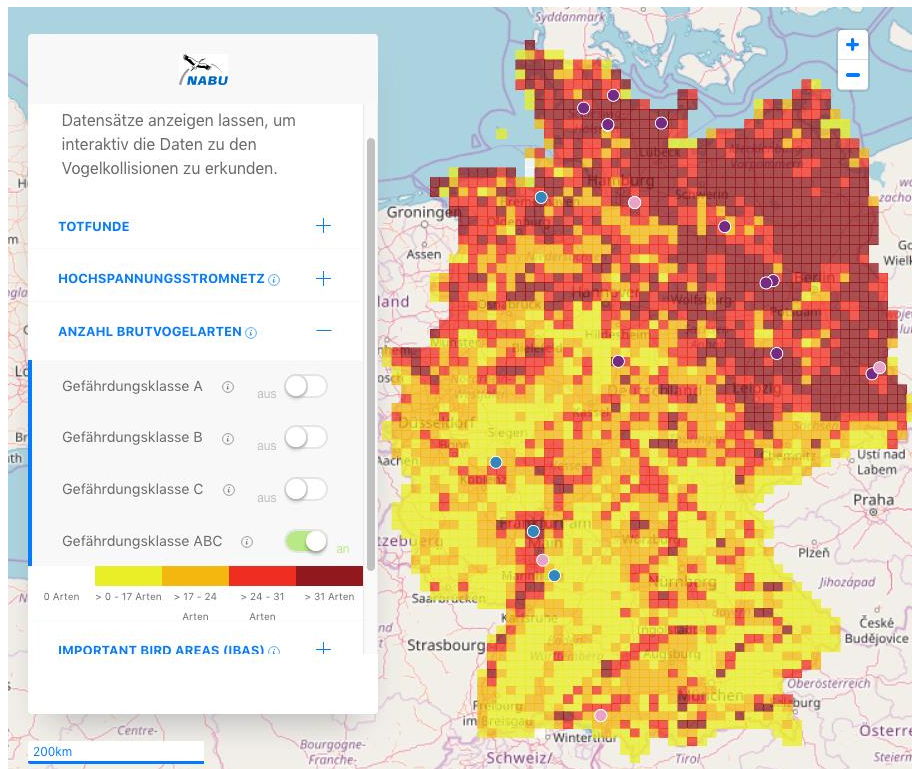
Monthly data transfer to  
TSOs

Bi-yearly data review





# Online mapping tool



# First there was the European Grid Declaration



## EUROPEAN GRID DECLARATION

On Electricity Network Development and Nature Conservation in Europe



Renewables  
Grid Initiative



## EUROPEAN GRID DECLARATION

On Transparency and Public Participation

The following Declaration is an extension of the „European Grid Declaration on Electricity Network Development and Nature Conservation in Europe“, signed on 10 November 2011.

Renewables  
Grid Initiative



swissgrid

Rte



nature's  
voice

BirdLife  
INTERNATIONAL

50hertz

RED  
ELECTRICA  
DE ESPAÑA

GREENPEACE

FRIENDS  
SUPERGRID

GERMANWATCH

European  
Climate Foundation

smart energy  
for europe platform

Global  
Nature  
Fund

Statnett

Deutsche Umwelthilfe

ZERO

elia  
Powering a world in progress

NATUUR  
& MILIEU

Terna

Friends of  
the Earth  
Scotland

nationalgrid



Tennet  
BELLONA

Friends of  
the Earth  
Europe



California ISO

# How we got this project set up





# How does it work in detail?



## NGO(s)/-Subcontractor

- Provide specific services/ knowledge, e.g.
- NABU runs hotline
- Germanwatch talks to stakeholders
- Öko-Institute develops meta-study
- Legambiente advises Terna

## RGI

- Coordination of 'consortium'
- Quality control
- Financial/contractual management
- Communication/dissemination
- Advisory role

## TSO(s)

- Varying role depending on project, e.g.
- Give feedback to hotline development, seize data
- Participate in Germanwatch stakeholder events
- Terna: Review of several internal processes and communication

# Why does the project setup matter?

- ❖ **No reliance on public funding/grant money..  
Not time limited!**
- ❖ **NGOs maintain their independence**
- ❖ **RGI acts as a mediator in the (inevitable..) small conflicts which arise**
- ❖ **Based on a solid foundation of understanding and legal obligation**

# Current status and what we have learnt

- **20 reports since launch in October 2017**
- **Main fatalities reported: geese, swans and storks (mainly in the North and East of Germany)**
- **Has improved the relationship between the TSOs and NABU – they have someone to call!**
- **Has also improved cooperation of TSOs and DSOs (distributors)**

# How to improve this project..

- **Tell your friends..** The more people that are aware of this project the more people know what to do!
- **Improve awareness and responsiveness within TSOs:** Working with regional teams to improve reporting
- **Link up with existing research.**
- **Expand the geographic scope**